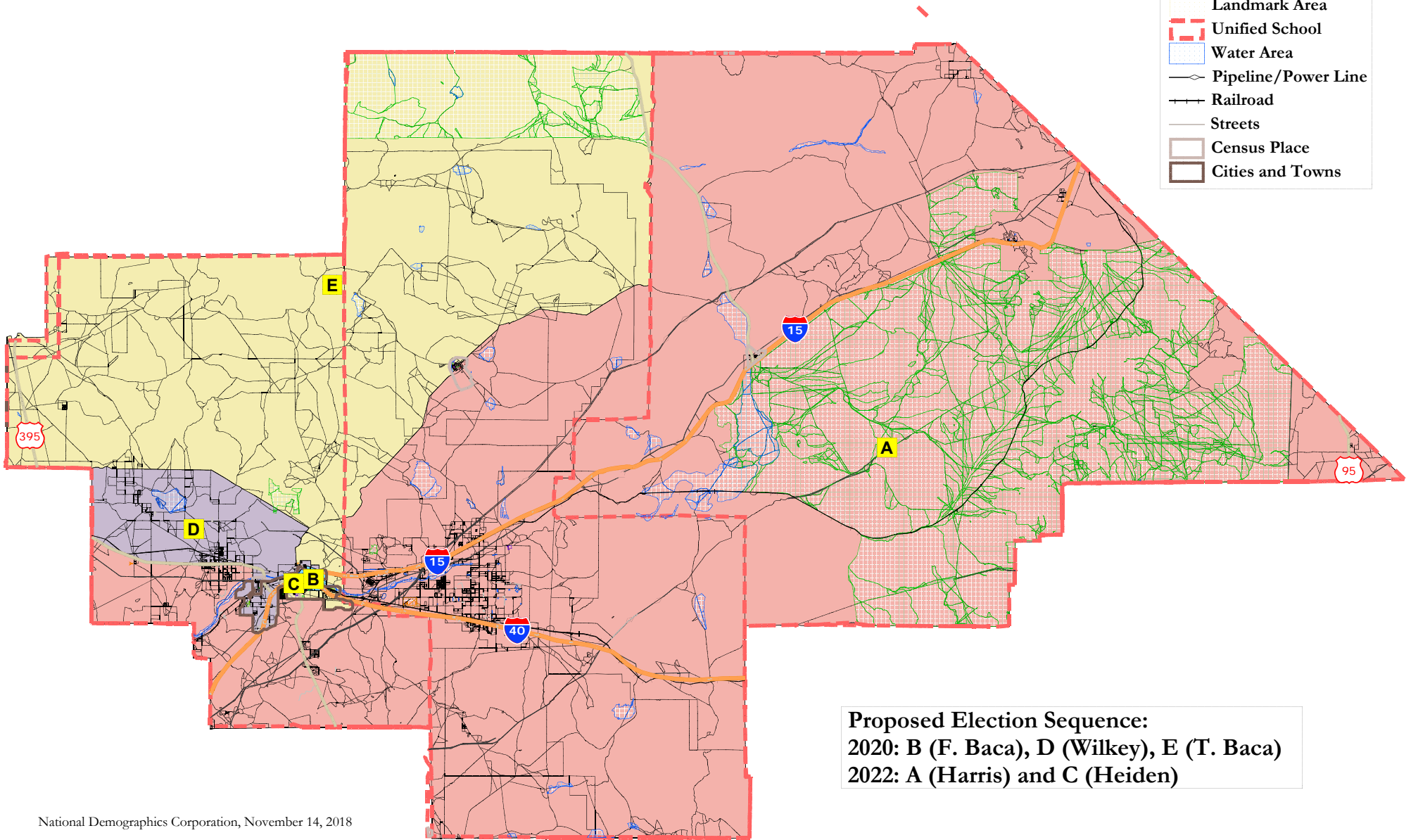


# Barstow Community College District

## Draft Map: Yellow

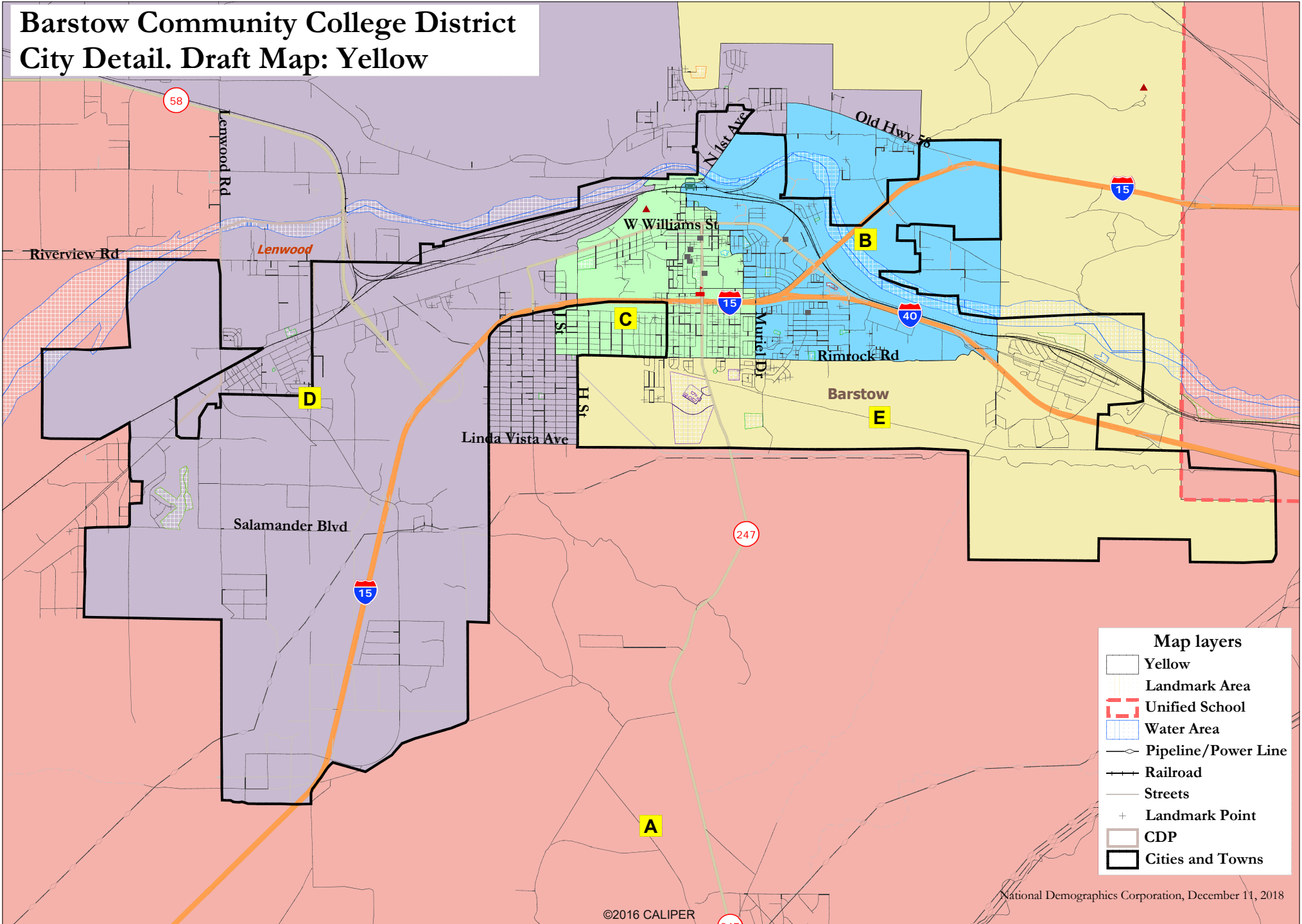
- Map layers
- Yellow
  - Census Block
  - Landmark Area
  - Unified School
  - Water Area
  - Pipeline/Power Line
  - Railroad
  - Streets
  - Census Place
  - Cities and Towns



**Proposed Election Sequence:**  
2020: B (F. Baca), D (Wilkey), E (T. Baca)  
2022: A (Harris) and C (Heiden)

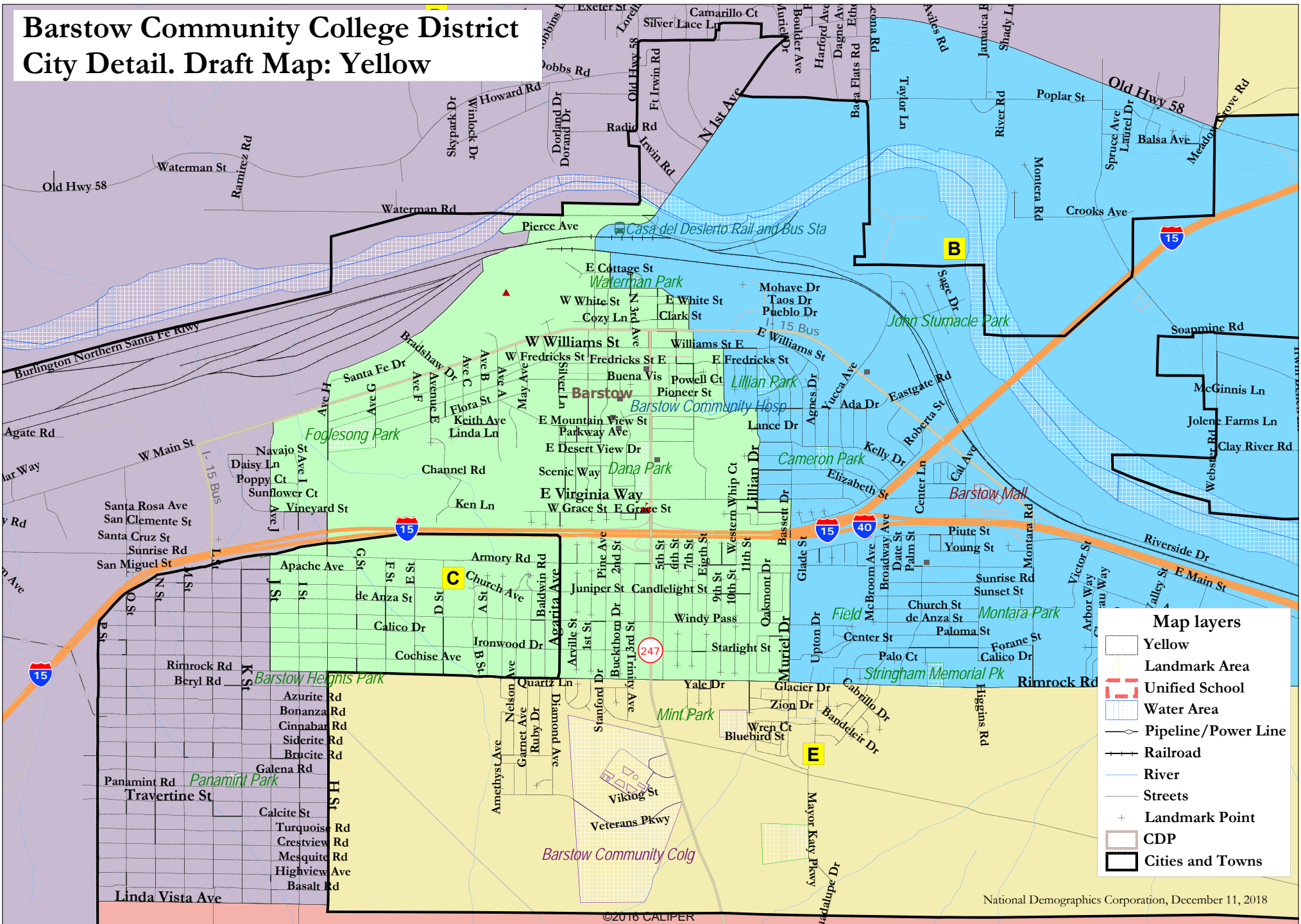
National Demographics Corporation, November 14, 2018

# Barstow Community College District City Detail. Draft Map: Yellow



Map layers	
	Yellow
	Landmark Area
	Unified School
	Water Area
	Pipeline/Power Line
	Railroad
	Streets
	Landmark Point
	CDP
	Cities and Towns

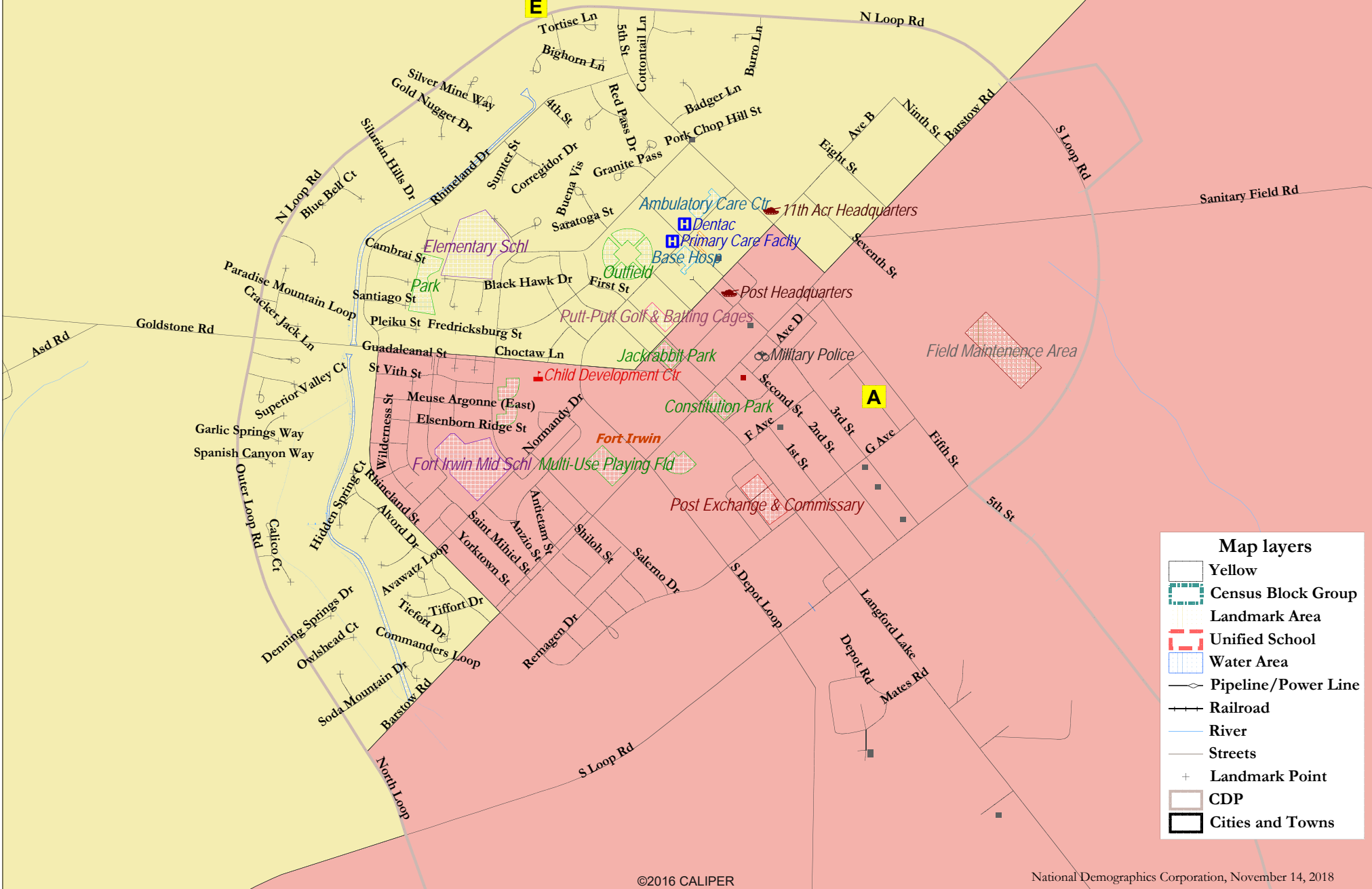
# Barstow Community College District City Detail. Draft Map: Yellow



National Demographics Corporation, December 11, 2018

©2016 CALIPER

# Barstow Community College District Fort Irwin Detail. Draft Map: Yellow



### Barstow CCD - Yellow Map

District		A	B	C	D	E	Total
Ideal	Total Pop	9,867	9,846	9,502	9,507	9,405	48,127
9,625	Deviation from ideal	242	221	-123	-118	-220	462
	% Deviation	2.51%	2.30%	-1.28%	-1.23%	-2.29%	4.80%
Total Pop	% Hisp	29%	45%	45%	41%	29%	38%
	% NH White	59%	34%	33%	48%	47%	44%
	% NH Black	6%	14%	15%	5%	13%	11%
	% Asian-American	3%	3%	3%	2%	6%	3%
Citizen Voting Age Pop	Total	5,952	6,733	5,910	6,893	5,547	31,035
	% Hisp	18%	43%	36%	37%	23%	32%
	% NH White	67%	40%	40%	52%	52%	50%
	% NH Black	10%	11%	19%	6%	16%	12%
	% Asian/Pac.Isl.	3%	4%	3%	2%	8%	4%
Voter Registration (Nov 2016)	Total	2,554	3,703	3,348	3,690	1,971	15,265
	% Latino est.	16%	34%	34%	31%	32%	30%
	% Spanish-Surnamed	15%	30%	30%	28%	29%	27%
	% Asian-Surnamed	1%	1%	1%	1%	2%	1%
	% Filipino-Surnamed	1%	1%	1%	1%	2%	1%
	% NH White est.	73%	50%	47%	61%	51%	56%
	% NH Black	3%	13%	15%	5%	11%	10%
Voter Turnout (Nov 2016)	Total	1,934	2,484	2,221	2,740	1,360	10,739
	% Latino est.	14%	33%	32%	28%	31%	28%
	% Spanish-Surnamed	13%	30%	29%	25%	28%	25%
	% Asian-Surnamed	1%	1%	1%	1%	2%	1%
	% Filipino-Surnamed	1%	1%	1%	1%	2%	1%
	% NH White est.	75%	51%	49%	64%	52%	58%
	% NH Black	3%	13%	15%	5%	11%	10%
Voter Turnout (Nov 2014)	Total	1,199	1,316	1,132	1,419	517	5,582
	% Latino est.	11%	28%	27%	23%	24%	23%
	% Spanish-Surnamed	10%	25%	24%	21%	22%	20%
	% Asian-Surnamed	1%	1%	1%	1%	2%	1%
	% Filipino-Surnamed	1%	2%	1%	0%	1%	1%
	% NH White est.	77%	54%	58%	70%	61%	64%
	% NH Black est.	2%	16%	12%	5%	9%	9%
ACS Pop. Est.	Total	9,890	10,254	10,055	10,002	9,751	49,952
Age	age0-19	35%	36%	37%	34%	41%	37%
	age20-60	48%	48%	50%	48%	54%	50%
	age60plus	17%	15%	13%	18%	5%	14%
Immigration	immigrants	11%	7%	10%	7%	11%	9%
	naturalized	40%	36%	36%	69%	40%	43%
Language spoken at home	english	79%	78%	74%	80%	77%	78%
	spanish	15%	19%	22%	18%	14%	18%
	asian-lang	5%	1%	2%	1%	7%	3%
	other lang	2%	1%	2%	1%	2%	1%
Language Fluency	Speaks Eng. "Less than Very Well"	7%	7%	8%	7%	6%	7%
Education (among those age 25+)	hs-grad	66%	70%	63%	68%	64%	66%
	bachelor	12%	6%	8%	5%	18%	9%
	graduatedegree	7%	4%	4%	4%	9%	5%
Child in Household	child-under18	38%	37%	40%	34%	60%	41%
Pct of Pop. Age 16+	employed	39%	49%	48%	52%	34%	45%
Household Income	income 0-25k	21%	38%	42%	26%	14%	29%
	income 25-50k	26%	19%	18%	25%	34%	24%
	income 50-75k	25%	19%	19%	22%	27%	22%
	income 75-200k	27%	22%	20%	26%	24%	24%
	income 200k-plus	1%	1%	1%	1%	1%	1%
Housing Stats	single family	87%	74%	69%	95%	61%	78%
	multi-family	13%	26%	31%	5%	39%	22%
	rented	47%	52%	61%	41%	78%	55%
	owned	53%	48%	39%	59%	22%	45%
Total population data from the 2010 Decennial Census.							
Surname-based Voter Registration and Turnout data from the California Statewide Database.							
Latino voter registration and turnout data are Spanish-surname counts adjusted using Census Population Department undercount estimates. NH White and NH Black registration and turnout counts estimated by NDC. Citizen Voting Age Pop., Age, Immigration, and other demographics from the 2012-2016 American Community Survey and Special Tabulation 5-year data.							